



701T

Soft Serve Freezer

Single Flavor

Features

Offer all the popular soft serve variations from low or non-fat ice creams to custards, yogurt and sorbet.

Freezing Cylinder

One, 2.8 quart (2.71 liter).

Mix Hopper

One, 14 quart (13.2 liter). Separate hopper refrigeration (SHR) maintains mix below 41 F (5 C) during Auto and Standby modes.

Indicator Lights

Mix Low light alerts operator to add mix. When the Mix Out light flashes, the unit shuts down automatically to prevent damage.

Electronic Controls

Softech[™] is our exclusive microprocessor based master control that regulates refrigeration by measuring product viscosity to maintain consistent quality.

Standby

During long no-use periods, the standby feature maintains safe product temperatures in the mix hopper and freezing cylinder.



Selected 50
Hz. Models

Taylor Foodservice Equipment Manufacturing (Shanghai) Co., Ltd.

Tel: +86 -21-3323-9898

Fax: +86-21-5483-3301

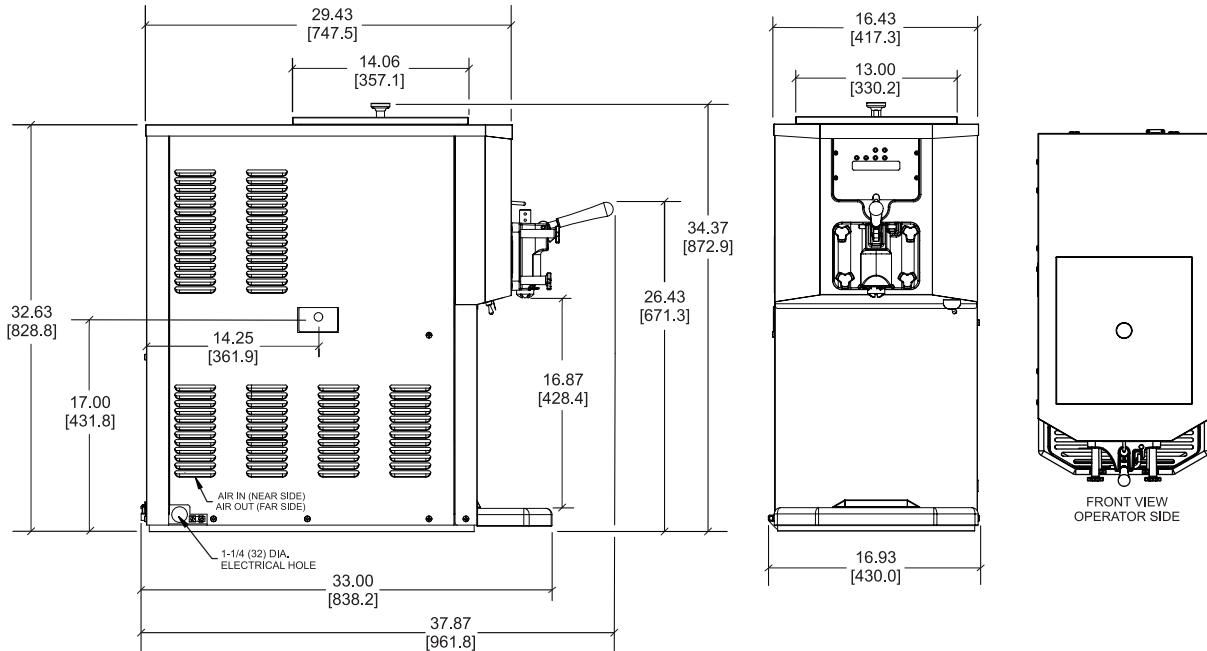
[Http://www.taylorchina.cn](http://www.taylorchina.cn)

Email: info@taylorfoodservice.com.cn

800-820-8861

400-820-8861

701T Soft Serve Freezer



FIGURES IN BRACKETS INDICATE MILLIMETERS / DECIMAL AND FRACTIONAL DIMENSIONS EQUAL TO (PLUS OR MINUS 1/16 INCH [1.5mm]).

Weights	lbs.	kgs.
Net	254	115.2
Crated	287	130.2
	cu. ft.	cu. m.
Volume	21.07	0.60
Dimensions	in.	mm.
Width	16-7/16	418
Depth	33	839
Height	34-3/8	873
Counter Clearance	---	---

*Designed to rest on a plastic pad directly on counter top.

Electrical	Maximum Fuse Size	Minimum Circuit Ampacity	Poles (P) Wires (W)
220-240/50/1 Air	15	13	1P 3W

This unit may be manufactured in other electrical characteristics. Refer to the local Taylor Distributor for availability.

(For exact electrical information, always refer to the data label of the unit.)

Specifications

Electrical

One dedicated electrical connection is required. See the Electrical chart for the proper electrical requirements. Manufactured to be permanently connected. Consult your local Taylor distributor for cord & receptacle specifications as local codes allow.

Beater Motor

One, 1.5 HP.

Refrigeration System

One, 6,000 BTU/hr. R404A.

Separate Hopper Refrigeration (SHR), One, 400 BTU/hr. R134a. (BTUs may vary depending on compressor used.)

Air Cooled

Minimum 6" (152mm) wall to prevent recirculation of warm air.

Minimum air clearances must be met to assure adequate airflow for optimum performance.

Options

- Cone Dispenser
- Decals- Flavor Burst Cone
- Decals- Vanilla Cone
- Hopper Locks
- Legs- [increase height of unit by 4-1/4"(108mm)]
- Syrup Rail Kit (side mount)
- Top Air Discharge Chute (air cooled only)

Bidding Specs

Electrical: Volt _____ Hz _____ ph _____

Neutral: Yes No **Cooling:** Air Water NA

Options: _____

Continuing research results in steady improvements; therefore, these specifications are subject to change without notice.



Taylor Foodservice Equipment Distribution (Shanghai) Co., Ltd.
 Add: 3988 Humin Road, Minhang District, Shanghai, China, 201108
 Tel: +86-21-3323-9898 Fax: +86-21-5483-3301
<http://www.taylorchina.cn>